

Ifremer

*French Research Institute
for the Exploitation of the Sea*



- **Public oceanographic institut**
- **Created in 1984 by addition of the first national oceanographic Institut CNEXO (1967) + ISTPM (1918)**
- **Under the state supervision of two ministries in charge of :**
 - **Research and Education (MENESR)**
 - **Ecology, sustainable developement and energy (MEDDE)**

Ifremer's activities

- *Applied research, initiated by the societal demand or by scientific needs*
- *Monitoring and expertise for public interest*
- *Managing large facilities and developing technology*

Delivered through 4 scientific departments :

- *Biological resources and environment*
- *Physical resources and deep sea ecosystems*
- *Oceanography and ecosystem dynamics*
- *Marine and digital infrastructure*

Locations

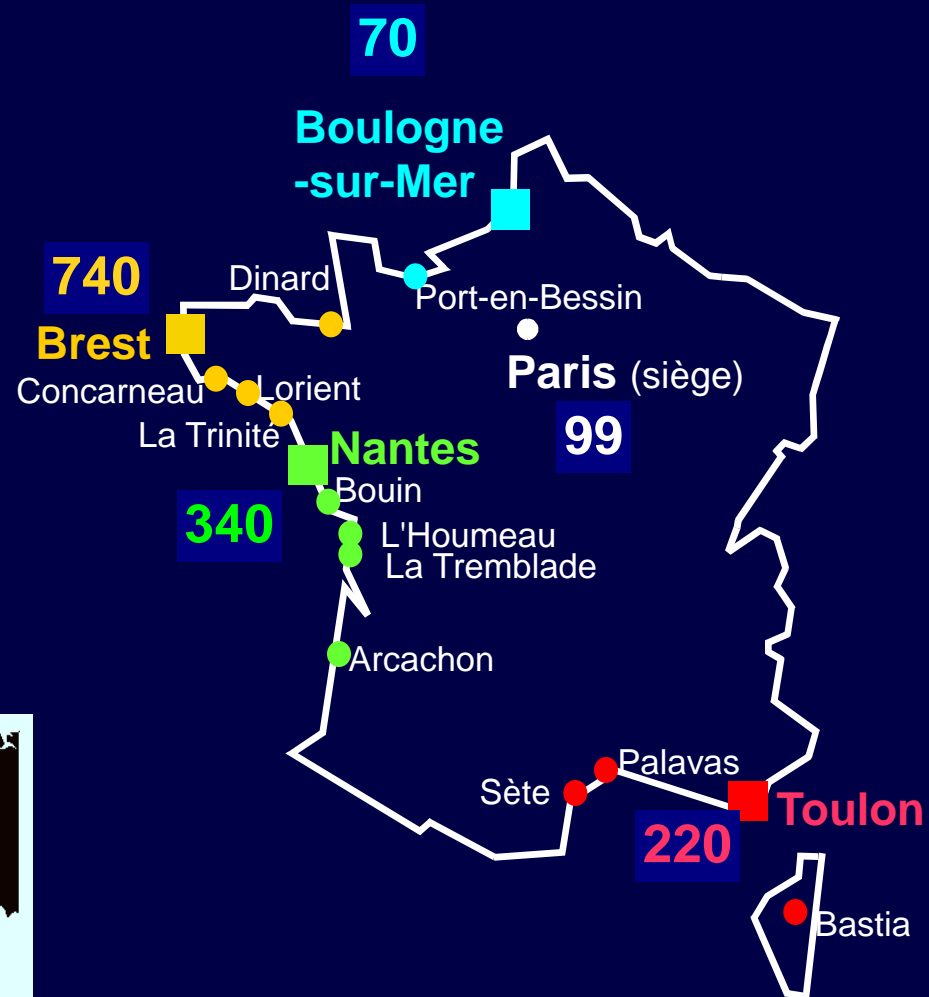
Ifremer

5 centres : Channel, Brittany, Atlantic coast, Mediterranean, Pacific

21 stations (Metropolitan and ultramarine)

88 research units

Headquarters near Paris



Budget

Minimum 200 millions d'euros

- *1 500+ permanent employees + 230 temporary e. short term contracts, doctoral and post-doctoral positions*
- *375 employees for our ship manager Genavir*
- *8 vessels, 1 submarine and 3 ROV and AUV*
- *Different marine experimental and rearing facilities*
- *1 large pool with marine water max. 20 m deep*

Ocean Research Fleet

■ **Ifremer manages a large part of the French ocean research fleet for the benefit of the French scientific community**

■ **4 blue ocean vessels**

● **L'Atalante**
(Commissioned in 1990
/ Length : 84,6 m)

● **Thalassa** (1996 /
73,65 m)

● **Le Suroît** (1975 /
modernization in 1999,
56,34 m)

● **Pourquoi pas ?** (2005
/ 107 m)



Thalassa

Underwater systems

■ **Ifremer has an entire range of underwater systems operational for the scientific community**



• **Nautilie (manned submersible, commissioned in 1984)**



• **Victor 6000 (remotely operated vehicle, commissioned in 1999)**



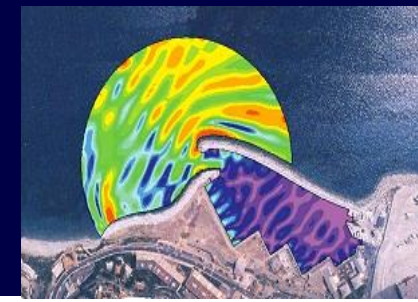
• **Aster (2 autonomous AUV, commissioned in 2004)**

The Ifremer Center in Brest

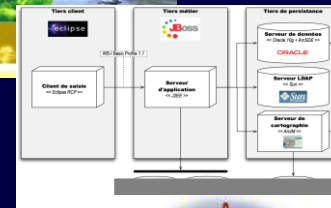
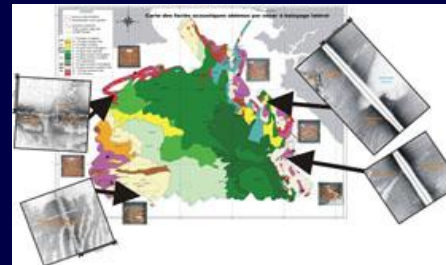
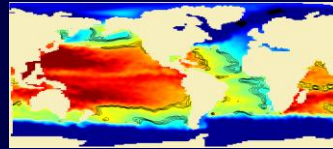


Physical oceanography , remote sensing, in situ monitoring

Départements/Brest

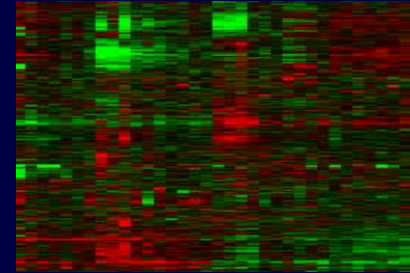
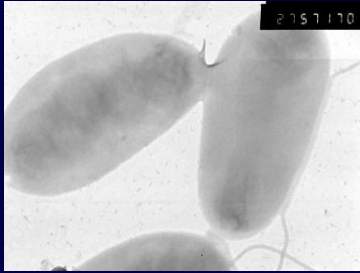


Dynamics of coastal environment

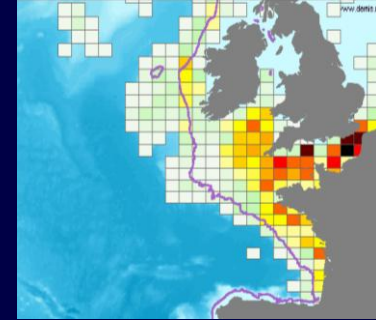


Information technology and marine data

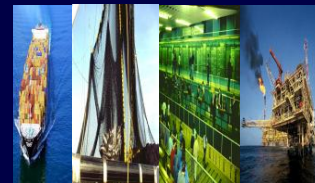
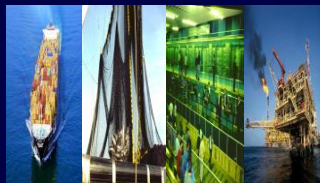




Physiology of marine organisms



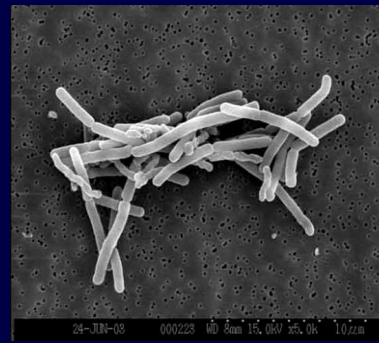
Fisheries science and technology



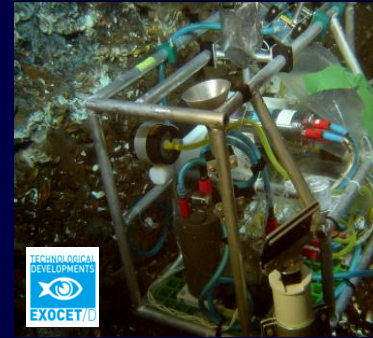
Départements/

Marine Economics

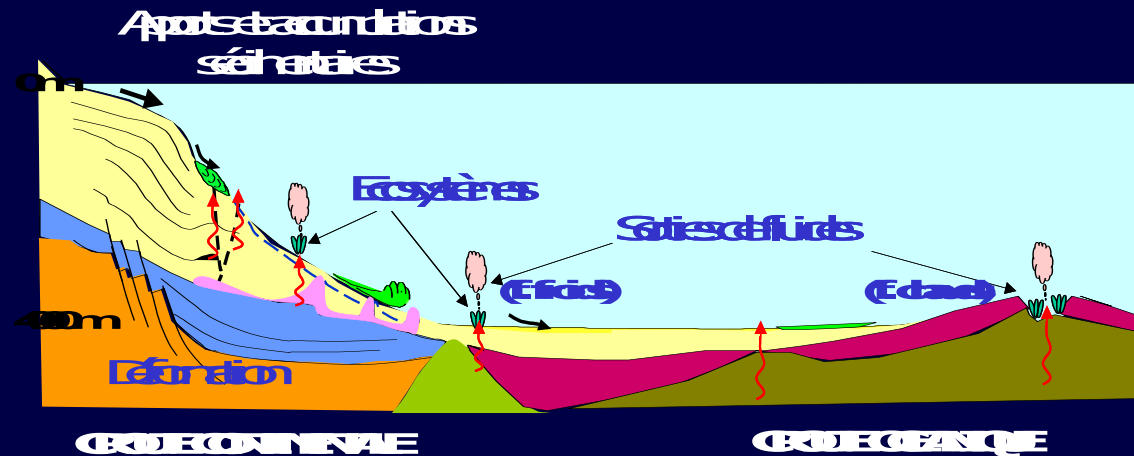
Marine Biotechnologies



Deep sea ecosystems

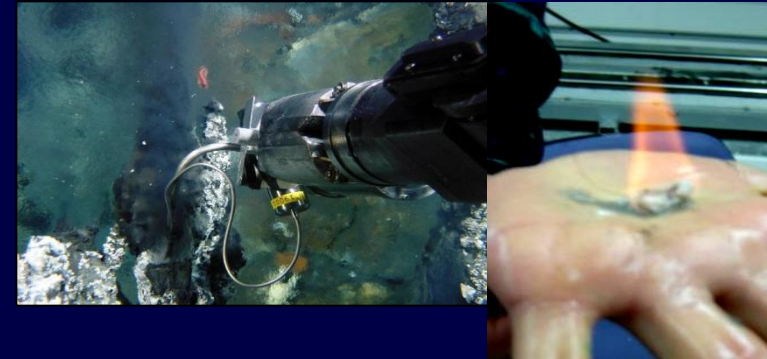


Marine geosciences



Exploration and exploitation of deep sea resources

Identifying new resources

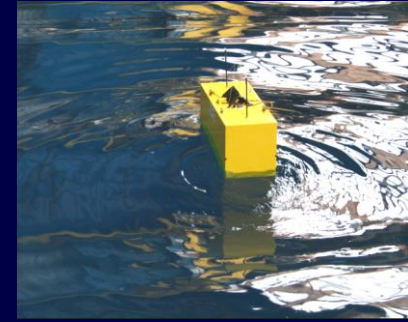


Sustainable exploitation of energies

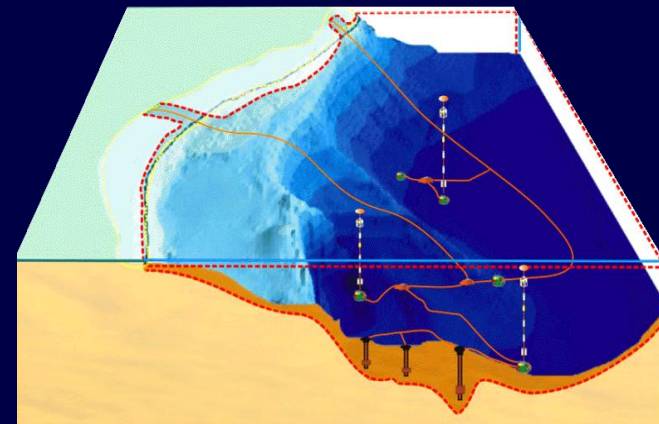
Renewable marine energies



Testing and technology research

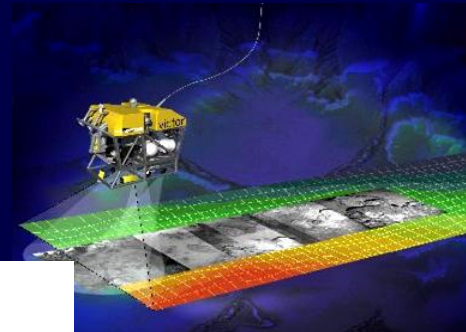


Technology for instrumentation and monitoring systems



Departements/Brest

Research vessels, on board systems



Ifremer's missions

■ Ifremer's missions are to conduct and promote basic and applied research, make expert assessment reports and take action for technological and industrial development intended to :

- Identify, evaluate and enhance marine resources and enable their sustainable exploitation (One of the historical topics of Ifremer : fisheries and aquaculture)**
- Improve methods of monitoring, forecasting trends, protecting and enhancing marine and coastal environments**
- Encourage the economic development of maritime activities**